

KUBOTA MINI EXCAVATOR U17-3

Major Service

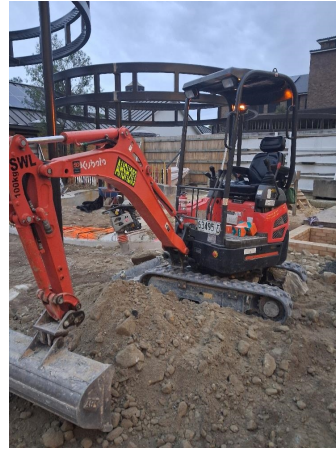
● 0 ● 7 ● 78 ● 19

Inspection Number	RP049150	Customer No	
Serial Number	60385	Customer Name	
Make	KUBOTA	Customer Email	
Model	U17-3	Works Order	RP049150
Equipment Family	<2T HYDRAULIC EXCAVATOR	Completed On	15/07/2025 8:55:39 PM
Asset ID	AHSH203	Inspector	Jake Raffen
Location	AUSTRILAN HAMMER SUPPLIES HIRE Unit 3/32 WILLIAMSON RD INGLEBURN 2565	PDF Generated On	15/07/2025
		Machine Hours	748
Customer		Next Meter	500

General Info & Comments

General Info/Comments

500hr service



Machine Hours

748

Next Service Due Hours

1000

TASK SAFETY INSTRUCTIONS

- 1.1 Wear Correct PPE at all times** NORMAL

- 1.2 All isolation and safe work procedures must be followed** NORMAL

- 1.3 Identify task hazards and controls utilising hierarchy or controls model** NORMAL

- 1.4 Ensure a competent operator and spotter is utilised to move mobile equipment** NORMAL

- 1.5 Ensure all mobile equipment is fundamentally stable** NORMAL

- 1.6 Ensure three points of contact is maintained during access and egress** NORMAL

1.7 Ensure acceptable housekeeping standards are maintained at all times NORMAL

MACHINE GENERAL RUNNINGCHECKS

2.1 Check all work lights, beacon & reverse alarm for operation PASS

2.2 Test all dash warning lights, gauges and audible alarms for correct operation PASS

2.3 Check idle timer for correct shut down operation N/A

2.4 Check operation of all three emergency stop buttons PASS

2.5 Check operation of horn PASS

2.6 Check operation of reverse camera PASS

2.7 Check alternator charge voltage - ACTUAL _____ V PASS

2.8 Check operation of auto grease system by manually activating timer N/A

2.9 Check fire system control panel for 'Normal' N/A

PM FIRE SUPPRESSION SYSTEM

5.1 Ensure fire suppression bottle and components are securely mounted and in good condition N/A

5.2 Ensure fire suppression is correctly charged N/A

5.3 Inspect last charge date - ACTUAL _____ N/A

5.4 Check all fire extinguishers are securely mounted and in good condition PASS

5.5 Check all fire extinguishers are correctly charged PASS

5.6 Inspect last charge date - ACTUAL _____ PASS

PM ENGINE

6.1 Perform engine valve set N/A

6.2 Inspect air intake system hoses, pipes, clamps for signs of dirt ingress PASS

6.3 Inspect engine for oil or fuel leaks PASS

● 6.4 Inspect engine components for missing clamps	PASS
● 6.5 Inspect exhaust system for signs of leaks, loose bolts or missing clamps	PASS
● 6.6 Inspect turbo for security and signs of leaks	PASS
● 6.7 Inspect condition of exhaust lagging	N/A
● 6.8 Inspect engine mounts for condition and loose hardware	PASS
● 6.9 Inspect alternator mount condition and adjustment	PASS
● 6.10 Inspect wiring condition and security	PASS
● 6.11 Inspect engine belts	PASS

PM ENGINE COOLING SYSTEM

● 7.1 Check coolant level	PASS
● 7.2 Check condition of radiator cap	PASS
● 7.3 Check condition of radiator core	PASS
● 7.4 Check cooling system for signs of leaks	PASS
● 7.5 Check hose and clamp condition	PASS
● 7.6 Inspect fan condition and operation	PASS
● 7.7 Inspect radiator and fan guard condition	PASS

PM SWING TRANSMISSION

● 8.1 Inspect swing transmission for signs of leaks	N/A
● 8.2 Inspect swing transmission oil level	N/A

PM HYDRAULIC SYSTEM

● 9.1 Check hydraulic oil level	PASS
● 9.2 Inspect hydraulic cylinders for leaks and security	PASS
● 9.3 Inspect hydraulic hoses for leaks, damage, security	PASS

● 9.4 Inspect hydraulic pump condition, leaks, security *PASS*

● 9.5 Check Pilot Accumulator operation as per OEM Maintenance Procedure - Test Boom Down Functionality with engine off *N/A*

PM FINAL DRIVES

● 10.1 Inspect LHS final drive mount condition for leaks and security *PASS*

● 10.2 Inspect LHS oil level and mag plug condition *PASS*

● 10.3 Inspect RHS final drive mount condition for leaks and security *PASS*

● 10.4 Inspect RHS oil level and mag plug condition *PASS*

PM UNDERCARRIAGE

● 11.1 Inspect LHS track tension *PASS*

● 11.2 Inspect RHS track tension *PASS*

● 11.3 Inspect tracks for loose/missing bolts *PASS*

● 11.4 Inspect load and carrier rollers for signs of leaks *PASS*

● 11.5 Inspect idlers for signs of leaks *PASS*

● 11.6 Inspect sprocket segments condition *PASS*

● 11.7 Inspect track frame for cracks, lose or missing hardware *PASS*

PM FRAME AND BODY

● 12.1 Check panels for damage and security *PASS*

● 12.2 Check access steps and walkway condition *PASS*

● 12.3 Inspect boom condition – cracks, missing clamps, damaged pipes, excessive movement, lubrication *PASS*

● 12.4 Inspect stick condition – cracks, missing clamps, damaged pipes, excessive movement, lubrication *PASS*

● 12.5 Inspect quick hitch condition and operation *PASS*

● 12.6 Inspect bucket condition – cracks, wear, damage, mounts *PASS*

12.7 Inspect GET condition and hardware PASS

PM ELECTRICAL SYSTEM

13.1 Check battery condition PASS

13.2 Check battery terminal condition PASS

13.3 Check battery security PASS

13.4 Check battery box drain is clear PASS

13.5 Check wiring condition and security PASS

PM GREASE SYSTEM

14.1 Check all points for acceptable lubrication PASS

14.2 Inspect grease system operation PASS

14.3 Check grease line condition PASS

14.4 Refill grease tank N/A

14.5 Lubricate bucket linkage PASS

14.6 Lubricate blade linkage PASS

14.7 Lubricate boom & stick linkage PASS

14.8 Lubricate swing bearing PASS

PM OPERATOR STATION

15.1 Check all doors for correct opening and closing adjustments and operation N/A

15.2 Inspect condition of door seals N/A

15.3 Check window glass and seal condition N/A

15.4 Check mirror condition and adjustments PASS

15.5 Fill window washer reservoir N/A

15.6 Inspect air con vents condition N/A

<input checked="" type="radio"/>	15.7 Inspect seat belt and mounting hardware	PASS
<input checked="" type="radio"/>	15.8 Inspect seat condition, operation and mounting	PASS
<input type="radio"/>	15.9 Replace cabin A/C filter	N/A

OIL SAMPLING

<input checked="" type="radio"/>	16.1 Engine	PASS
----------------------------------	-------------	------

PM POST SERVICE INSPECTION CHECKS

<input checked="" type="radio"/>	17.1 All inspections have been completed and rectified as required	NORMAL
<input checked="" type="radio"/>	17.2 All safety related defects have been repaired or reported	NORMAL
<input checked="" type="radio"/>	17.3 All defects have been noted and reported	NORMAL
<input checked="" type="radio"/>	17.4 All fluids are at correct level and drain plugs tight	NORMAL
<input checked="" type="radio"/>	17.5 All oil samples have visually been inspected and any notable signs of contamination have been reported	NORMAL
<input checked="" type="radio"/>	17.6 All replaced filters have been cut and inspected and photos added to CAT Inspect and reported to supervisor	NORMAL
<input checked="" type="radio"/>	17.7 Machine has been recommissioned and ready for operation	NORMAL
<input type="radio"/>	17.8 PM service notification marked off in Vision Link	N/A

DEFECTS IDENTIFIED

<input checked="" type="radio"/>	18.1 DEFECTS IDENTIFIED	PASS
----------------------------------	-------------------------	------

OIL USED

<input type="radio"/>	19.1 Hydraulic oil	0
<input type="radio"/>	19.2 Enggine oil	5
<input type="radio"/>	19.3 Slew oil	0
<input type="radio"/>	19.4 Gear oil	2